

2060
189

184

Cor. Secs 1-2
N. 1/2 T. 5. N. R. 3. W.

Feb. 24th 1896.
Higley, et. Hooper,

Chas. W. Higley & Arthur Flowers }
Chairmen

Burial made for Geo. & Chas. to locate corners of Sec 2. Tps. 11. R. 3. W. 10648.1
to Flag at N.E. cor. Sec. 6. T. 5. N. R. 2.

N 40° 19' E
To Benl.

Weber River.
S. Edge Weber.
S 42° 58' E

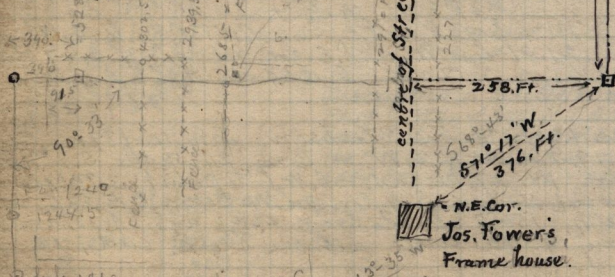
N 38° 16' E
Benl.
Stoney hills
Cor. sec. 1-2-11-12
T. 5. N. R. 3. W.

log sin 14° 35' 30" = 9.401278
cc. " " = 0.598722
log tan 24° 30' = 9.935761
log 2772 = 3.442793
log 10647.1 = 4.027271
 0.26942
 408) 3340 (81
 3264
 760

Cor. of Secs 1-2 on N. 1/2 T. 5. N. R. 3. W. is a granite block 12" x 6 x 6, 9" above ground firmly set. pile N 1/2, S 1/2, S. 1/2, S. 1/2, W. 1/2, W. 1/2. mound on S. side of arm of Weber Riv. about 500 ft S. of bank, and about 100 ft W. of bank. Benl. pk. bears N 40° 47' E. Obs. PK bears S 84° 28' E. N. E. cor. Sec. 6. T. 5. N. R. 2. W. bears E. 10648. ft dist.

Mag. Var 17° E
Feb. 24-1896.

N 16-



Cor. to Sec 3
11-12-13+14
T. 5. N. R. 3. W.
granite stone 12 x 8 x 5" bearing
2 ft marked 1 notch E. +
4 notches S. in plowed field.

sub 1869 = slab mason E.
S 65° 35' W
3957